

# Guide for parents September 2020

## Class 5JS

This guide is designed to outline how our school provision, including childcare, will work from September 2020.

The first day back is Thursday 3<sup>rd</sup> September.

We appreciate that there is a lot of information in this document, but we want to keep you fully informed about how school will operate in September. Some things will look a little different but many of our policies remain in place as normal.

### What will my child's timetable be like?

Children in class **5JS** will follow this timetable:

Day	Entrance & exit to use	Optional paid childcare	Sibling start time	All other entry	Finish time	Sibling finish time	Club time (if applicable)	What my child will need:
Mon	Using the entrance that Reception usually use, at the front of the school	From 8:15	8:45	9:05	3:05	3:15	3:05-4:00	Water bottle & reading book that will stay in school.
Tues		From 8:15	8:45	9:05	3:05	3:15		
Wed		From 8:15	8:45	9:05	3:05	3:15		Arrive in school wearing Outdoor Learning kit/Forest School clothing & bring suitable footwear.
Thurs		From 8:15	8:45	9:05	3:05	3:15		
Fri		From 8:15	8:45	9:05	3:05	3:15		Arrive in school wearing P.E. kit suitable for an outdoor P.E. session. Return any school reading books if applicable

### What if I have more than one child in the school?

To minimise parent's pickup and drop offs, whilst also maintaining the bubble system, there will be a designated siblings drop off and pickup time.

This means that if you have more than one child in the school, you will bring all of your children at 8.45am and collect them all at 3.15pm, from their respective entrance or exit.

## Frequently asked questions

The following question and answer guide is designed to give you as much information as we can about how school will operate in September and what you and your child will need to know to make the transition back to school as smooth as possible.

### Where will my child enter and exit?

Each class has a designated entry and exit that they must use. In this pack, there is a building floor plan, which will show you which entrance and exit to use and it is also marked on the timetable above. Videos of the entrances will also be uploaded to Seesaw.

Please make sure there is only **one** adult picking up and dropping off your child. Older siblings, who do not attend the school, should **not** be accompanying adults into the school site to collect other children.

It is vital that you arrive at the allocated time. You will not be allowed to drop off or collect your child prior to your time slot.

### Can I park on the school site?

The staff car park is currently fenced off to provide additional outdoor play space for the children, to minimise the mixing of class bubbles around the school. Staff are therefore required to park in the spaces on the school driveway and therefore car parking will be very limited. Please be considerate of the surrounding houses and residents if parking in the areas around the school.

### Can my child walk home alone?

Children in Year 5 and 6 can walk home on their own. If you have a child in Year 5 or 6, please fill out the following Google Form as proof of permission.

<https://forms.gle/fuurqDmxcs14wiBQ9>

### What should my child wear for school?

Full school uniform is expected every day. Even though the school logo is changing on things such as letterheads, our uniform will **remain the same** until September 2021. Therefore, your child will be required to wear:

- White blouse, shirt or polo shirt - completely plain or with school logo.
- Jade green sweatshirt, jumper or cardigan with school logo
- Grey or black trousers, shorts, skirts, shalwakameez or pinafores - all completely plain, with no patterns, logos etc.
- In the warmer weather, children may wish to wear green and white check dresses.
- Plain black, low heeled shoes

Please also be aware that, for Health & Safety reasons, no jewellery is allowed, this includes earrings. A watch may be worn.

## What should my child wear for PE?

On the day that your child has PE, they must arrive that morning, already in their kit (see below).

5JS will have PE on **Fridays**. This will be outdoors.

For PE they will need;

- A white t-shirt
- Black or navy shorts or unbranded tracksuit bottoms
- Sandshoes or trainers
- Black or navy unbranded sweatshirt or coat for outdoor PE
- **No football shirts or kits will be permitted.**

## What should my child wear for Outdoor Learning?

On the day where your child has an Outdoor Learning session, they must arrive that morning, already in their kit (see below). If they wish to bring their outdoor footwear in a bag, they can change into these prior to the session.

The sessions will take place at the end of the school day and children will go straight home afterwards.

5JS will participate in Outdoor Learning on **Wednesdays**.

For Outdoor Learning they will need;

- Their school jumper and t-shirt as normal
- A pair of appropriate trousers or tracksuit bottoms. **No jeans.**
- A waterproof coat
- Waterproof trousers if you have them
- Appropriate footwear e.g. walking boots or wellies
- Hats & gloves for cold weather or a sunhat for warmer weather

These sessions will be similar to Forest School, so please do not send your child in anything that is new or valuable, as it may get dirty and/or wet.

**Please note: Our school policy on jewellery, such as earrings, still applies and long hair must be tied back for these activities.**

## How will lunchtime work in September?

If your child is entitled to Free School Meals, or you wish to purchase a school meal via 'Joinos', a hot lunch will be provided for them, to eat in their classroom.



### Hot Classroom Dining Menu

WEEK 1				
MONDAY	TUESDAY	WEDNESDAY	THURSDAY	FRIDAY
Pork or vegetarian hot dogs in a finger roll served with chips & salad	Margarita pizza served with baked potato wedges & salad	Cheesy pasta served with garlic bread & salad	Breaded chicken or Quorn fillet wrap served with crisps & salad	Fish finger sandwich or vegetable fingers served with chips & salad
Fresh fruit or chocolate shortbread biscuit	Fresh fruit or yoghurt	Fresh fruit or fruit jelly	Fresh fruit or strawberry delight	Fresh fruit or oaty fruit crunch biscuit

If you would prefer your child to have their own packed lunch, this must be in a container or bag that can be disposed of at the end of the day. We are a nut-free site and our policy on packed lunches not containing **any** products with nuts still applies.

Children will eat their lunch in their classroom and then will have 15 minutes to play outside afterwards. This time has been shortened, however they have longer P.E. slots and additional outdoor learning opportunities to compensate for this.

## Can my child play football at break and lunchtime?

School are strictly adhering to government guidelines around physical activity. The guidelines state that team games and sports that require contact should be avoided; Football is classed as an invasion game, where the children will be in a close proximity to each other. Therefore, games of football will not be permitted in the first half term. This will be reviewed in October.

Each class will play outside in their class bubble. They will have a set of play equipment to choose from and school staff will lead activities that adhere to social distancing guidelines. Balls may be included in the equipment boxes, but children will not be allowed to pass those between each other, to minimise the risk of transmitting the virus.

Staff from the class bubble will clean the play equipment after every use, to ensure the safe sharing of resources between the pupils in the class.

### Can my child bring anything to school?

Your child **does not** need to bring anything with them to school. We are now permitting water bottles, but would prefer that these were left in school where they will be refilled and cleaned regularly.

Our policy on mobile phones still applies. Please see our school website for information on mobile phones in school.

Pencil cases will be provided for each child, so they have the equipment they need. Please do not bring pencil cases from home.

In September 2020, there will be **no** bikes or scooters permitted. This is because not everyone is entering via the yard where the bike shelter is and we won't be able to guarantee that they will be safely stored. This will be reviewed in October.

### Reading books

Children will be given a school reading book on a **Monday**. This needs to be returned to school on a **Friday**. This allows us to provide a 'quarantine' period for the safe sharing of resources.

### What if my child needs medication in school?

If your child needs medication in school, this will need to be signed in at the school office. Please contact the school office on 0191 643 2801 and you will be given a designated time slot for dropping off your child's medication. This will avoid too many people arriving at the school office at the same time.

### What if my child is anxious and needs reassurance or comforting?

We recognise that this is a challenging time for many children and they may feel worried about coming into school. Staff will be available at all entry and exit points to direct your child into school and reassure them. Whilst we have a duty to protect our staff and children and must adhere to social distancing guidelines where possible, we will ensure that we always support your children emotionally. Mrs Dobson, Mrs Robertson or Mrs Allan will be outside until the last group enters the building as an additional support measure.

**For this half term, some things will operate slightly differently:**

- Further information will follow about Reflection events and homework
- No educational visits will take place in the first half term and we will review this in October

### **What childcare is available?**

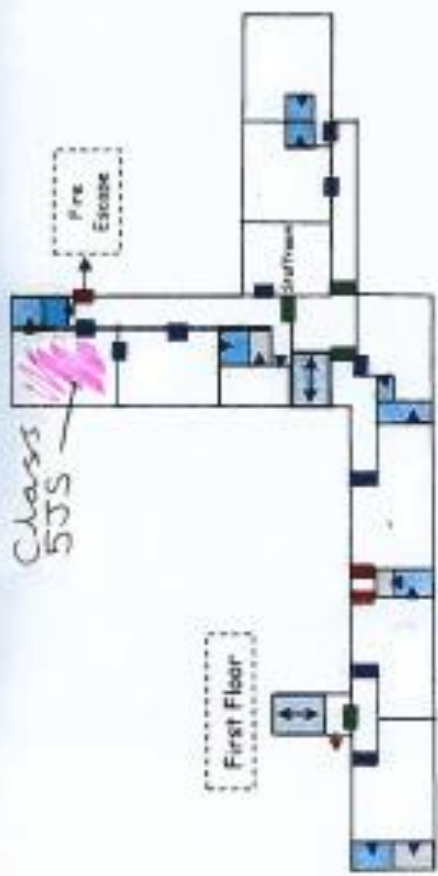
Our usual Out of Hours provision is not operating as normal. Instead, we are offering optional childcare in the morning **from 8.15am, in your child's classroom**. For this, we would be asking for a contribution of £1 and children will be entitled to a drink and snack.

We are working hard on plans to also provide some childcare afterschool. It is likely that we can provide after school childcare in year group bubbles on set nights until 5pm. Details on this will follow, but please use the link from the covering letter to register your interest in childcare if applicable.

**Please do not hesitate to contact us if you have any queries or concerns.**

**Thank you for your continued support.**

Greenfields Community Primary School  
**MAIN SCHOOL BUILDING FLOOR PLAN**



5JS  
 Yard Break  
 / Lunch

